

louvers / gable vents



Need a maintenance free gable vent? Ekena Urethane Gable Vents are your perfect solution. Offered as either functional or decorative, our vents come in 15 styles and hundreds of sizes. We even factory prime each vent with an environmentally friendly primer, so they are ready for installation immediately. With a thick brickmold-type trim, our vents can be used in either new construction or surface-mount applications.

Eyebrow & Peaked Top Gable Vents



Peaked Top Gable Vents

Part #	*D or F	W x H	Price	
			D	F
GVPE12X32-18	D / F	12" x 18"	\$72	\$76
GVPE12X32-20	D / F	12" x 20"	\$72	\$76
GVPE12X32-22	D / F	12" x 22"	\$72	\$76
GVPE12X32-24	D / F	12" x 24"	\$72	\$76
GVPE12X32-26	D / F	12" x 26"	\$72	\$76
GVPE12X32-28	D / F	12" x 28"	\$72	\$76
GVPE12X32-30	D / F	12" x 30"	\$72	\$76
GVPE12X32*	D / F	12" x 32"	\$62	\$66
GVPE24X30-18	D / F	24" x 18"	\$108	\$116
GVPE24X30-20	D / F	24" x 20"	\$108	\$116
GVPE24X30-22	D / F	24" x 22"	\$108	\$116
GVPE24X30-24	D / F	24" x 24"	\$108	\$116
GVPE24X30-26	D / F	24" x 26"	\$108	\$116
GVPE24X30-28	D / F	24" x 28"	\$108	\$116
GVPE24X30*	D / F	24" x 30"	\$98	\$106
GVPE24X36-32	D / F	24" x 32"	\$116	\$122
GVPE24X36-34	D / F	24" x 34"	\$116	\$122
GVPE24X36*	D / F	24" x 36"	\$106	\$112
GVPE24X54-38	D / F	24" x 38"	\$140	\$146
GVPE24X54-40	D / F	24" x 40"	\$140	\$146
GVPE24X54-42	D / F	24" x 42"	\$140	\$146
GVPE24X54-44	D / F	24" x 44"	\$140	\$146
GVPE24X54-46	D / F	24" x 46"	\$140	\$146
GVPE24X54-48	D / F	24" x 48"	\$140	\$146
GVPE24X54-50	D / F	24" x 50"	\$140	\$146
GVPE24X54-52	D / F	24" x 52"	\$140	\$146
GVPE24X54*	D / F	24" x 54"	\$130	\$136

Eyebrow Gable Vents

Part #	Type	W x H	Price	
			*D or F	F
GVEY12X24-16	D / F	12" x 16"	\$55	\$66
GVEY12X24-18	D / F	12" x 18"	\$55	\$66
GVEY12X24-20	D / F	12" x 20"	\$55	\$66
GVEY12X24-22	D / F	12" x 22"	\$55	\$66
GVEY12X24*	D / F	12" x 24"	\$45	\$56
GVEY18X30-16	D / F	18" x 16"	\$90	\$95
GVEY18X30-18	D / F	18" x 18"	\$90	\$95
GVEY18X30-20	D / F	18" x 20"	\$90	\$95
GVEY18X30-22	D / F	18" x 22"	\$90	\$95
GVEY18X30-24	D / F	18" x 24"	\$90	\$95
GVEY18X30-26	D / F	18" x 26"	\$90	\$95
GVEY18X30-28	D / F	18" x 28"	\$90	\$95
GVEY18X30*	D / F	18" x 30"	\$80	\$85



Vertical Gable Vents

Part #	*D or F	W x H	Price	
			D	F
GVVE16X24-18	D / F	16" x 18"	\$76	\$86
GVVE16X24-20	D / F	16" x 20"	\$76	\$86
GVVE16X24-22	D / F	16" x 22"	\$76	\$86
GVVE16X24*	D / F	16" x 24"	\$66	\$76
GVVE16X36-26	D / F	16" x 26"	\$89	\$98
GVVE16X36-28	D / F	16" x 28"	\$89	\$98
GVVE16X36-30	D / F	16" x 30"	\$89	\$98
GVVE16X36-32	D / F	16" x 32"	\$89	\$98
GVVE16X36-34	D / F	16" x 34"	\$89	\$98
GVVE16X36*	D / F	16" x 36"	\$79	\$88
GVVE18X24-12	D / F	18" x 12"	\$80	\$94
GVVE18X24-14	D / F	18" x 14"	\$80	\$94
GVVE18X24-16	D / F	18" x 16"	\$80	\$94
GVVE18X24-18	D / F	18" x 18"	\$80	\$94
GVVE18X24-20	D / F	18" x 20"	\$80	\$94
GVVE18X24-22	D / F	18" x 22"	\$80	\$94
GVVE18X24*	D / F	18" x 24"	\$70	\$84
GVVE18X30-26	D / F	18" x 26"	\$85	\$95
GVVE18X30-28	D / F	18" x 28"	\$85	\$95
GVVE18X30*	D / F	18" x 30"	\$75	\$85
GVVE18X36-32	D / F	18" x 32"	\$90	\$100
GVVE18X36-34	D / F	18" x 34"	\$90	\$100
GVVE18X36*	D / F	18" x 36"	\$80	\$90
GVVE24X36-12	D / F	24" x 12"	\$108	\$114
GVVE24X36-14	D / F	24" x 14"	\$108	\$114
GVVE24X36-16	D / F	24" x 16"	\$108	\$114
GVVE24X36-18	D / F	24" x 18"	\$108	\$114
GVVE24X36-20	D / F	24" x 20"	\$108	\$114
GVVE24X36-22	D / F	24" x 22"	\$108	\$114
GVVE24X36-24	D / F	24" x 24"	\$108	\$114
GVVE24X36-26	D / F	24" x 26"	\$108	\$114
GVVE24X36-28	D / F	24" x 28"	\$108	\$114
GVVE24X36-30	D / F	24" x 30"	\$108	\$114
GVVE24X36-32	D / F	24" x 32"	\$108	\$114
GVVE24X36-34	D / F	24" x 34"	\$108	\$114
GVVE24X36*	D / F	24" x 36"	\$98	\$104

Vertical Gable Vents

Part #	*D or F	W x H	Price	
			D	F
GVVE12X18-12	D / F	12" x 12"	\$58	\$65
GVVE12X18-14	D / F	12" x 14"	\$58	\$65
GVVE12X18-16	D / F	12" x 16"	\$58	\$65
GVVE12X18*	D / F	12" x 18"	\$48	\$55
GVVE12X24-20	D / F	12" x 20"	\$68	\$75
GVVE12X24-22	D / F	12" x 22"	\$68	\$75
GVVE12X24*	D / F	12" x 24"	\$58	\$65
GVVE12X36-26	D / F	12" x 26"	\$82	\$90
GVVE12X36-28	D / F	12" x 28"	\$82	\$90
GVVE12X36-30	D / F	12" x 30"	\$82	\$90
GVVE12X36-32	D / F	12" x 32"	\$82	\$90
GVVE12X36-34	D / F	12" x 34"	\$82	\$90
GVVE12X36*	D / F	12" x 36"	\$72	\$80
GVVE15X15-12	D / F	15" x 12"	\$62	\$66
GVVE15X15-14	D / F	15" x 14"	\$62	\$66
GVVE15X15*	D / F	15" x 15"	\$52	\$56
GVVE15X30-16	D / F	15" x 16"	\$77	\$84
GVVE15X30-18	D / F	15" x 18"	\$77	\$84
GVVE15X30-20	D / F	15" x 20"	\$77	\$84
GVVE15X30-22	D / F	15" x 22"	\$77	\$84
GVVE15X30-24	D / F	15" x 24"	\$77	\$84
GVVE15X30-26	D / F	15" x 26"	\$77	\$84
GVVE15X30-28	D / F	15" x 28"	\$77	\$84
GVVE15X30*	D / F	15" x 30"	\$67	\$74
GVVE16X24-12	D / F	16" x 12"	\$76	\$86
GVVE16X24-14	D / F	16" x 14"	\$76	\$86
GVVE16X24-16	D / F	16" x 16"	\$76	\$86

Cathedral & Half Round Gable Vents



Cathedral Top Gable Vents

Part #	*D or F	W x H	Price	
			D	F
GVCA12X24-16	D / F	12" x 16"	\$55	\$66
GVCA12X24-18	D / F	12" x 18"	\$55	\$66
GVCA12X24-20	D / F	12" x 20"	\$55	\$66
GVCA12X24-22	D / F	12" x 22"	\$55	\$66
GVCA12X24*	D / F	12" x 24"	\$45	\$56
GVCA14X32-24	D / F	14" x 24"	\$95	\$95
GVCA14X32-26	D / F	14" x 26"	\$95	\$95
GVCA14X32-28	D / F	14" x 28"	\$95	\$95
GVCA14X32-30	D / F	14" x 30"	\$95	\$95
GVCA14X32*	D / F	14" x 32"	\$85	\$85
GVCA16X36-28	D / F	16" x 28"	\$100	\$100
GVCA16X36-30	D / F	16" x 30"	\$100	\$100
GVCA16X36-32	D / F	16" x 32"	\$100	\$100
GVCA16X36-34	D / F	16" x 34"	\$100	\$100
GVCA16X36*	D / F	16" x 36"	\$90	\$90
GVCA18X30-22	D / F	18" x 22"	\$96	\$104
GVCA18X30-24	D / F	18" x 24"	\$96	\$104
GVCA18X30-26	D / F	18" x 26"	\$96	\$104
GVCA18X30-28	D / F	18" x 28"	\$96	\$104
GVCA18X30*	D / F	18" x 30"	\$86	\$94
GVCA22X32-24	D / F	22" x 24"	\$115	\$125
GVCA22X32-26	D / F	22" x 26"	\$115	\$125
GVCA22X32-28	D / F	22" x 28"	\$115	\$125
GVCA22X32-30	D / F	22" x 30"	\$115	\$125
GVCA22X32*	D / F	22" x 32"	\$105	\$115

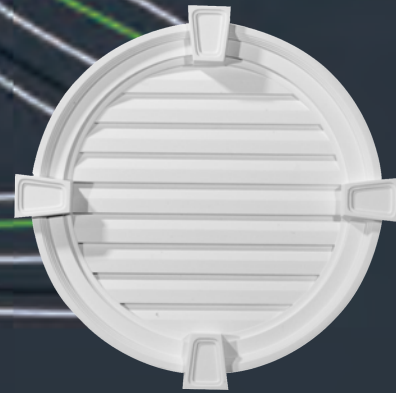
Cathedral Top Gable Vents Trim

Part #	W x H	Inside W x H	Price
GVCAT32X22	30" x 41"	22" x 32"	\$90



Half Round Gable Vents

Part #	*D or F	W x H	Price	
			D	F
GVHR24*	D	24" x 12"	\$58	n/a
GVHR28*	D	28" x 14"	\$62	n/a
GVHR32*	D	32" x 16"	\$72	n/a
GVHR36*	D	36" x 18"	\$78	n/a
GVHR40*	D / F	40" x 20"	\$92	\$100
GVHR48*	D / F	48" x 24"	\$110	\$120
GVHR60*	D / F	60" x 30"	\$140	\$150

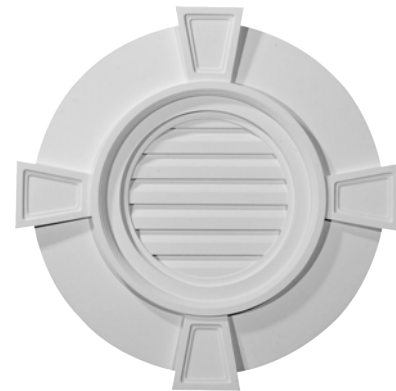


Round Gable Vents

Part #	*D or F	W x H	Price	
			D	F
GVRO12*	D / F	12"	\$38	\$42
GVRO16*	D / F	16"	\$48	\$53
GVRO18*	D / F	18"	\$50	\$55
GVRO22*	D / F	22"	\$58	\$64
GVRO24*	D / F	24"	\$70	\$76
GVRO28*	D / F	28"	\$86	\$94
GVRO30*	D / F	30"	\$92	\$101
GVRO36*	D / F	36"	\$115	\$126

Round Gable Vents with Keystones

Part #	*D or F	W x H	Price	
			D	F
GVRO24T*K	D / F	24"	\$103	\$107
GVRO30T*K	D / F	30"	\$110	\$120
GVRO36T*K	D / F	36"	\$115	\$125



Round Gable Vents (Wide Trim)

Part #	*D or F	W x H	Price	
			D	F
GVRO20*	D / F	20"	\$52	\$57
GVRO23*	D / F	23"	\$65	\$65
GVRO27*	D / F	27"	\$80	\$80

Round Gable Vents with Keystones

Part #	*D or F	W x H	Price	
			D	F
GVRO22*K	D / F	22"	\$94	\$98
GVRO24*K	D / F	24"	\$103	\$107

Octagonal, Triangle & Diamond Gable Vents



Octagon Gable Vents

Part #	*D or F	W x H	Price	
			D	F
GVOC18X18*	D / F	18"	\$45	\$52
GVOC22X22*	D / F	22"	\$57	\$67
GVOC30X30*	D / F	30"	\$85	\$92

Round Gable Vents Trim

Part #	W x H	Inside W x H	Price
GVROT18	21 3/4"	18 1/4"	\$37
GVROT24	21 3/4"	18 1/4"	\$38
GVROT28	21 3/4"	18 1/4"	\$48

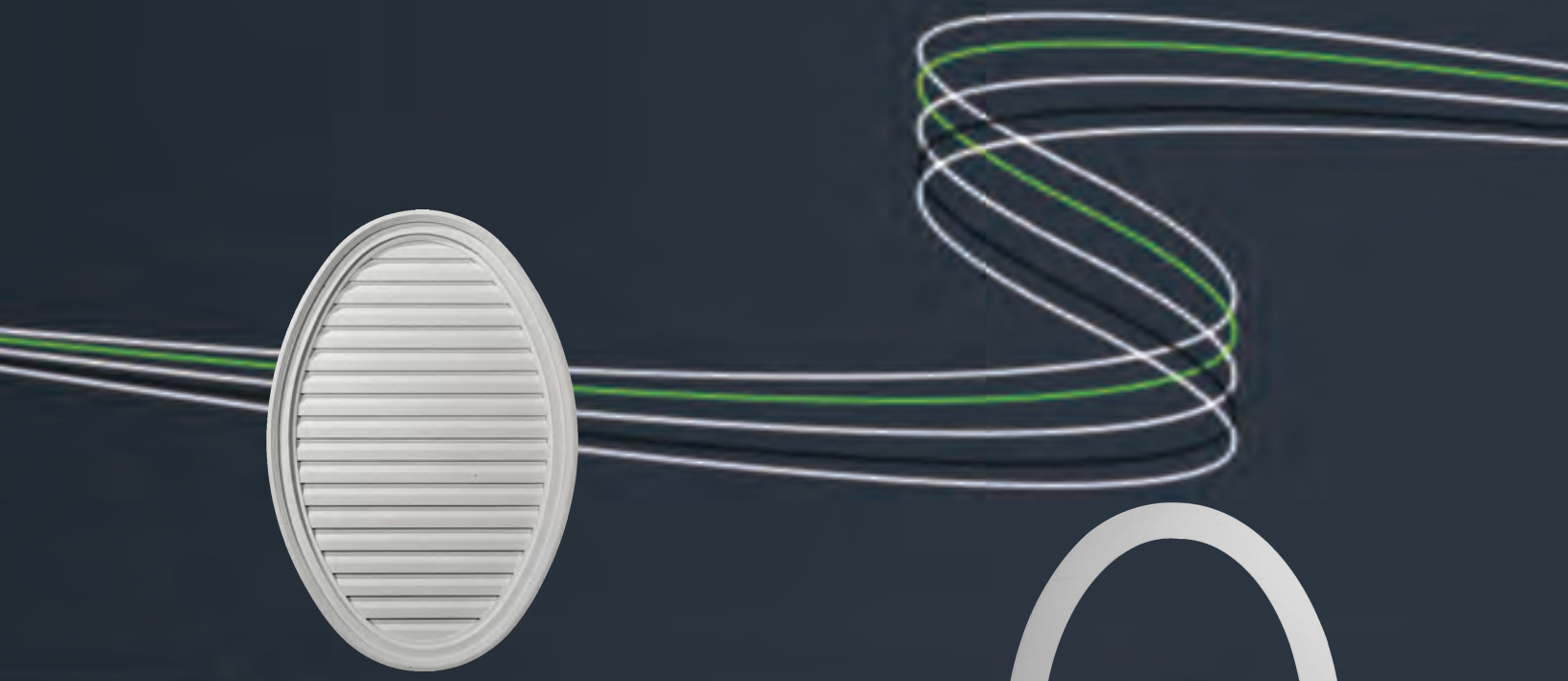


Triangle Gable Vents

Part #	*D or F	W x H	Price	
			D	F
GVTR48X20*	D / F	48" x 20"	\$114	\$124
GVTR48X24*	D / F	48" x 24"	\$123	\$133
GVTR65X21*	D / F	65" x 21"	\$129	\$139
GVTR65X27*	D / F	65" x 27"	\$139	\$149
GVTR65X32*	D / F	65" x 32"	\$164	\$175
GVTR72X18*	D / F	72" x 18"	\$124	\$135
GVTR72X21*	D / F	72" x 21"	\$129	\$139

Diamond Gable Vents

Part #	*D or F	W x H	Price	
			D	F
GVDI34X34*	D / F	34" x 34"	\$85	\$96



Oval Gable Vents

Part #		W x H	Price	Price
	*D or F		D	F
GVOV25X37*	D / F	24 1/2" x 37"	\$120	\$130



Oval Gable Vents Trim

Part #	W x H	Inside W x H	Price
GVOVT32X44	32" x 44"	25" x 37"	\$82



Oval Gable Vents with Keystones

Part #		W x H	Price	Price
	*D or F		D	F
GVOV29X20*	D / F	29" x 20"	\$160	\$170

THE EKENA MILLWORK COLLECTION

One of our goals is to offer you the most complete architectural millwork line in the industry. In an effort to do so, we continue to add products and product lines to our offering on a regular basis. Some of our standard products include:

- Balustrade
- Brackets
- Ceiling Domes
- Ceiling Medallions
- Columns
- Corbels
- Crossheads & Headers
- Crown Moulding
- Door Knockers
- Finials
- Fireplace Surrounds
- Gable Vents
- Niches
- Onlays
- Panel Moulding
- Pediments
- Pilasters
- Plinth Blocks
- Rosettes
- Shutters
- Shutter Hardware
- Wall Sconces
- Window & Door Trim
- Wood Brackets
- Wood Gable Vents

For a complete product listing, please visit us at:
www.ekenamillwork.com



BALUSTRADE



WOOD CARVING

CEILING MEDALLIONS



WOOD GABLE VENTS



BRACKETS



MOULDING

PRODUCT BROCHURES

In addition to this extensive catalog and price list, we have product-specific brochures available. Each brochure contains pictures, descriptions, and part numbers for every product in that category – but they do not contain any product pricing. The brochures also open up to form a large poster. This makes them perfect as both a handout, and a marketing display.

DISTRIBUTED BY:



NOT JUST A PRODUCT...A SOLUTION.
EKENAMILLWORK

2300 West Main St.
Clarksville, TX 75426
(866) 607-0453 ph
(866) 591-3143 Fax
www.ekenamillwork.com

Ekena Millwork is a registered trademark of Ekena Millwork.
All rights reserved. ©2012 Ekena Millwork.